



34.6ft, Davison, 1981, Traditional Style



BERTHS:

2



TOILET:

Porta potti



HEATING:

-



SURVEY:

-



B.S.C:

New with Sale



BLACKING:

2015



ENGINE:

Sabb



LAYOUT:

Standard

**Whilton
marina**

Whilton Locks, Near Daventry,
Northants, NN11 2NH

01327 842577

sales@whiltonmarina.co.uk

www.whiltonmarina.co.uk

**For further information please see
a member of the sales team.**

It is the responsibility of the buyer to ensure that all particulars given in the course of the purchase of the boat are accurate. Such particulars are intended only as a guide and do not constitute a term of any contract.



Boat Specification

Plating Specification	6/5/3
Flat, V-Hull or Keeled	Flat Hull
Fitted out By	Professional and Owner
Fixed Berths	-
Additional Berths	Sofa bed

Engine Specification

Engine Make	Sabb
No. Of Cylinders	1
Keel, Water or Air Cooled	Keel Cooled
Gearbox Make	Sabb
Aqua Drive	No
Bow Thruster	No
Diesel Tank Capacity	25 gallons approx

Hot Water & Heating Systems

Source of Hot Water	Paloma
Central Heating	-
Solid Fuel Stove	Heron
Water Tank Capacity	120 gallons approx
Material used	Integral
Additional Systems	-

Electrical System & Components

12 Volt Lighting	Yes
240 Volt Landline	No
Inverter	-
Generator	-
Batteries	2 domestic, 1 starter
Additional Systems	-

Bathroom Specification

Type Of Toilet	Porta potti
Bath Fitted	No
Separate Shower Fitted	Yes
Vanity Basin Fitted	Yes
Additional Systems	-

Kitchen Specification

Make & Model Of Cooker	Voyager 4500
Separate Hob	-
Microwave Fitted	-
Make & Model Of Fridge	Electrolux 3 way
Gas, 12 volt or 240 volt	Gas
Additional Systems	-

Fit Out Materials

Insulation Used

Types Of Wood Used

Window Types

Materials Used

Bulls Eye, Pigeon Box or Houdini Hatch

Exterior Doors

Side Hatches

Front & Back Covers

Polystyrene

Oak and Ash ply

Hopper

Aluminium

-

Front - Wood, Back - Steel

No

Front cratch & cover

History Of Vessel

Boat Safety Certificate

Last Hull Blacking

Anodes

Further Maintenance

Recent Survey

Additional Information

RCD/RCR Compliant?

Further Information

New with Sale

2015

2015

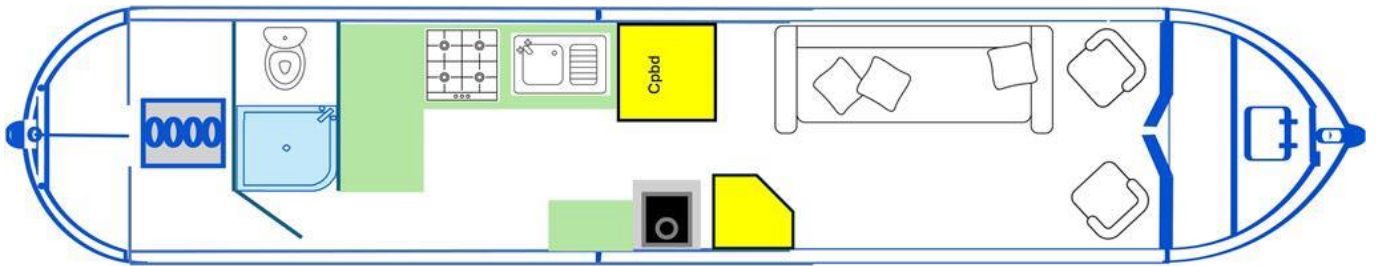
-

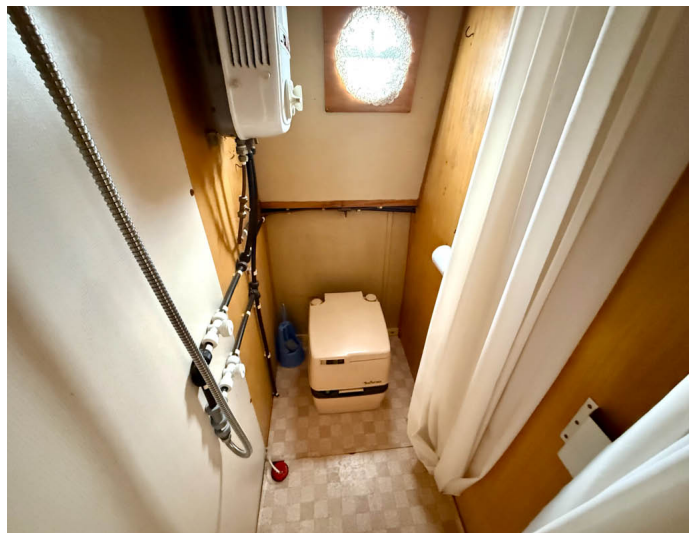
-

-

Not Applicable

-





Whilton Locks, Near Daventry,
Northants, NN11 2NH
01327 842577
sales@whiltonmarina.co.uk
www.whiltonmarina.co.uk

**For further information please see
a member of the sales team.**

It is the responsibility of the buyer to ensure that all particulars given in the course of the purchase of the boat are accurate. Such particulars are intended only as a guide and do not constitute a term of any contract.

