



60ft, Midland Canal Centre, 2003, Cruiser Style



BERTHS:

2



TOILET:

Pumpout



HEATING:

-



SURVEY:

-



B.S.C:

New with sale



BLACKING:

March 2025



ENGINE:

Beta 38



LAYOUT:

Standard

**Whilton
marina**

Whilton Locks, Near Daventry,
Northants, NN11 2NH

01327 842577

sales@whiltonmarina.co.uk

www.whiltonmarina.co.uk

**For further information please see
a member of the sales team.**

It is the responsibility of the buyer to ensure that all particulars given in the course of the purchase of the boat are accurate. Such particulars are intended only as a guide and do not constitute a term of any contract.



Boat Specification

Plating Specification	10/6/4
Flat, V-Hull or Keeled	Flat Hull
Fitted out By	Owner
Fixed Berths	Fixed double
Additional Berths	-

Engine Specification

Engine Make	Beta 38
No. Of Cylinders	4
Keel, Water or Air Cooled	Keel Cooled
Gearbox Make	PRM 150
Aqua Drive	No
Bow Thruster	No
Diesel Tank Capacity	200 litres approx

Hot Water & Heating Systems

Source of Hot Water	Engine
Central Heating	-
Solid Fuel Stove	Yes
Water Tank Capacity	90 gallons approx
Material used	Integral
Additional Systems	-

Electrical System & Components

12 Volt Lighting	Yes
240 Volt Landline	Yes
Inverter	2500w
Generator	-
Batteries	2 domestic, 1 starter
Additional Systems	-

Bathroom Specification

Type Of Toilet	Pumpout
Bath Fitted	No
Separate Shower Fitted	Yes
Vanity Basin Fitted	Yes
Additional Systems	-

Kitchen Specification

Make & Model Of Cooker	Vanette GG7000
Separate Hob	Yes
Microwave Fitted	-
Make & Model Of Fridge	Lec
Gas, 12 volt or 240 volt	12v
Additional Systems	-

Fit Out Materials

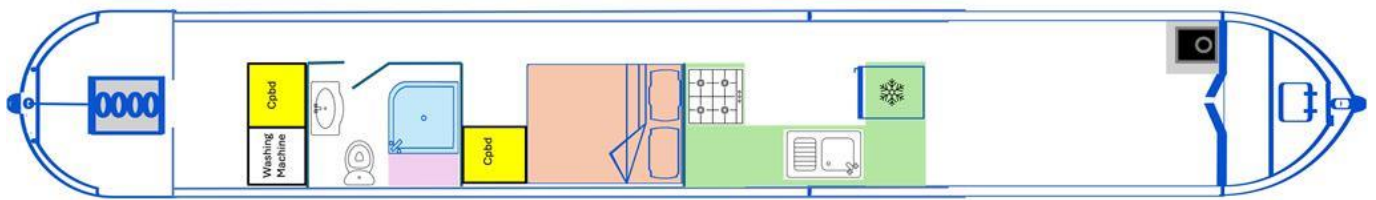
Insulation Used
Types Of Wood Used
Window Types
Materials Used
Bulls Eye, Pigeon Box or Houdini Hatch
Exterior Doors
Side Hatches
Front & Back Covers

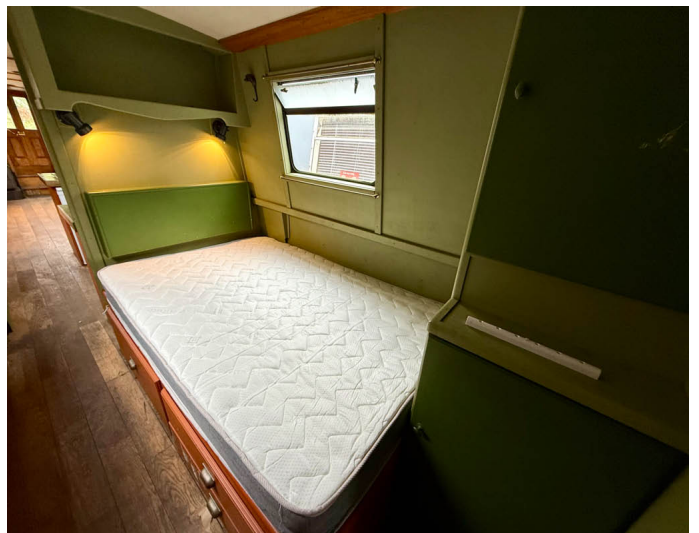
Spray Foam
Painted ply
Hopper
Powder Coated
-
Front - Wood, Back - Steel
No
-

History Of Vessel

Boat Safety Certificate
Last Hull Blacking
Anodes
Further Maintenance
Recent Survey
Additional Information
RCD/RCR Compliant?
Further Information

New with sale
March 2025
Checked March 2025
-
-
-
No
-





Whilton Locks, Near Daventry,
Northants, NN11 2NH
01327 842577
sales@whiltonmarina.co.uk
www.whiltonmarina.co.uk

For further information please see
a member of the sales team.

It is the responsibility of the buyer to ensure that all particulars given in
the course of the purchase of the boat are accurate. Such particulars are
intended only as a guide and do not constitute a term of any contract.

