

JOSEPHINE

£41,950
£34,950

KEY
45



45ft, Mike Heywood, 1994, Traditional Style



BERTHS:

2



TOILET:

Thetford cassette
(new Oct 23)



HEATING:

-



SURVEY:

-



B.S.C:

December 2026



BLACKING:

Oct 2023



ENGINE:

Bmc 1.8



LAYOUT:

Standard

Whilton
marina

Whilton Locks, Near Daventry,
Northants, NN11 2NH

01327 842577

sales@whiltonmarina.co.uk

www.whiltonmarina.co.uk

**For further information please see
a member of the sales team.**

It is the responsibility of the buyer to ensure that all particulars given in the course of the purchase of the boat are accurate. Such particulars are intended only as a guide and do not constitute a term of any contract.



Boat Specification

Plating Specification	10/6/4
Flat, V-Hull or Keeled	Flat Hull
Fitted out By	Owner
Fixed Berths	Fixed double
Additional Berths	-

Engine Specification

Engine Make	Bmc 1.8
No. Of Cylinders	4
Keel, Water or Air Cooled	Keel Cooled
Gearbox Make	PRM delta 20
Aqua Drive	No
Bow Thruster	No
Diesel Tank Capacity	30 gallons approx

Hot Water & Heating Systems

Source of Hot Water	Paloma
Central Heating	-
Solid Fuel Stove	Kabola diesel
Water Tank Capacity	150 gallons approx
Material used	Integral
Additional Systems	-

Electrical System & Components

12 Volt Lighting	Yes
240 Volt Landline	Yes
Inverter	-
Generator	-
Batteries	2 domestic, 1 starter
Additional Systems	-

Bathroom Specification

Type Of Toilet	Thetford cassette (new Oct 23)
Bath Fitted	No
Separate Shower Fitted	Yes
Vanity Basin Fitted	Yes
Additional Systems	-

Kitchen Specification

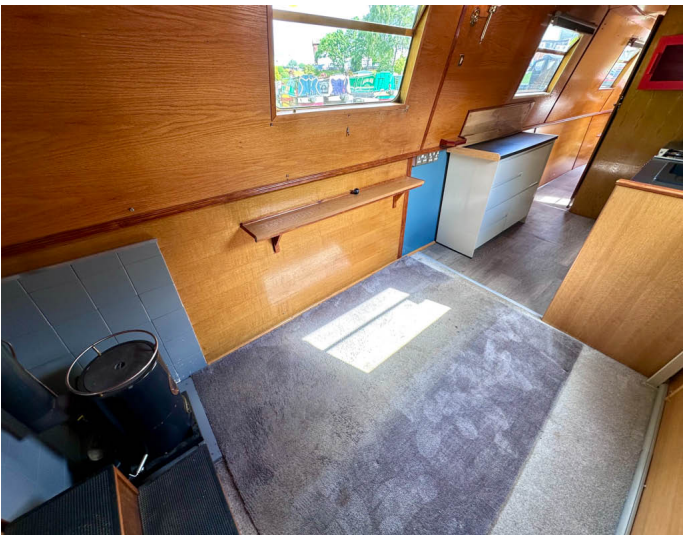
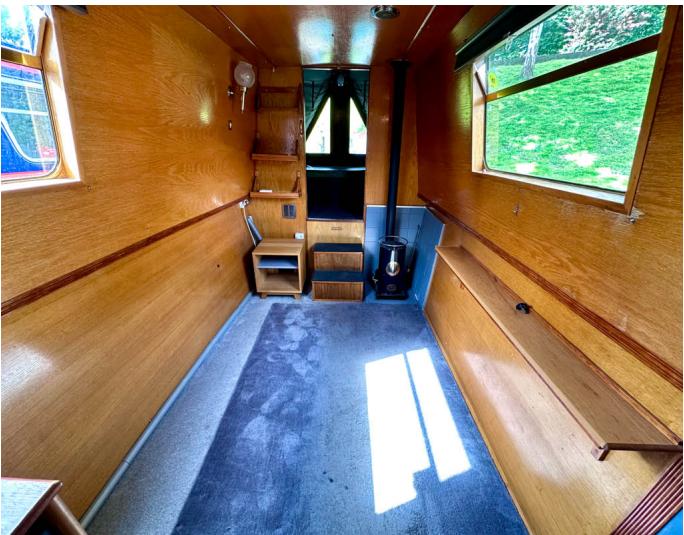
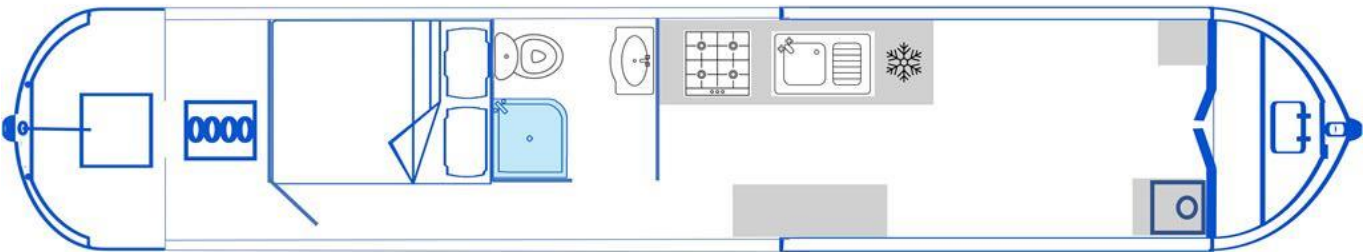
Make & Model Of Cooker	Vanette 5000WL
Separate Hob	-
Microwave Fitted	-
Make & Model Of Fridge	Logik
Gas, 12 volt or 240 volt	240 volt
Additional Systems	-

Fit Out Materials

Insulation Used	Rockwool
Types Of Wood Used	Oak
Window Types	Hopper
Materials Used	Gold Anodised
Bulls Eye, Pigeon Box or Houdini Hatch	-
Exterior Doors	Front - Wood, Back - Steel
Side Hatches	No
Front & Back Covers	Front cratch & cover

History Of Vessel

Boat Safety Certificate	December 2026
Last Hull Blacking	Oct 2023
Anodes	Checked Oct 2023
Further Maintenance	-
Recent Survey	-
Additional Information	-
RCD/RCR Compliant?	Not Applicable
Further Information	-





Whilton Locks, Near Daventry,
Northants, NN11 2NH
01327 842577
sales@whiltonmarina.co.uk
www.whiltonmarina.co.uk

**For further information please see
a member of the sales team.**

It is the responsibility of the buyer to ensure that all particulars given in the course of the purchase of the boat are accurate. Such particulars are intended only as a guide and do not constitute a term of any contract.

