



## 60ft, Arcrite, 1989, Cruiser Style



**BERTHS:**

2



**TOILET:**

Porta potti



**HEATING:**

Webasto



**SURVEY:**

-



**B.S.C.:**

Feb 2026



**BLACKING:**

April 2022



**ENGINE:**

Vetus



**LAYOUT:**

Reverse

**Whilton**  
marina

Whilton Locks, Near Daventry,  
Northants, NN11 2NH

01327 842577

[sales@whiltonmarina.co.uk](mailto:sales@whiltonmarina.co.uk)

[www.whiltonmarina.co.uk](http://www.whiltonmarina.co.uk)

**For further information please see  
a member of the sales team.**

It is the responsibility of the buyer to ensure that all particulars given in the course of the purchase of the boat are accurate. Such particulars are intended only as a guide and do not constitute a term of any contract.



## Boat Specification

Plating Specification	6/6/3
Flat, V-Hull or Keeled	Flat Hull
Fitted out By	Professional
Fixed Berths	Fixed double
Additional Berths	-

## Engine Specification

Engine Make	Vetus
No. Of Cylinders	4
Keel, Water or Air Cooled	Raw Water Cooled
Gearbox Make	-
Aqua Drive	No
Bow Thruster	No
Diesel Tank Capacity	Unknown

## Hot Water & Heating Systems

Source of Hot Water	Engine Webasto
Central Heating	Webasto
Solid Fuel Stove	Morso squirell
Water Tank Capacity	Unknown
Material used	Unknown
Additional Systems	-

## Electrical System & Components

12 Volt Lighting	Yes
240 Volt Landline	Yes
Inverter	Victron Energy
Generator	-
Batteries	3 domestic, 1 starter
Additional Systems	2 solar panels

## Bathroom Specification

Type Of Toilet	Porta potti
Bath Fitted	No
Separate Shower Fitted	Yes
Vanity Basin Fitted	Yes
Additional Systems	-

## Kitchen Specification

Make & Model Of Cooker	ESS
Separate Hob	-
Microwave Fitted	-
Make & Model Of Fridge	No
Gas, 12 volt or 240 volt	-
Additional Systems	-

## Fit Out Materials

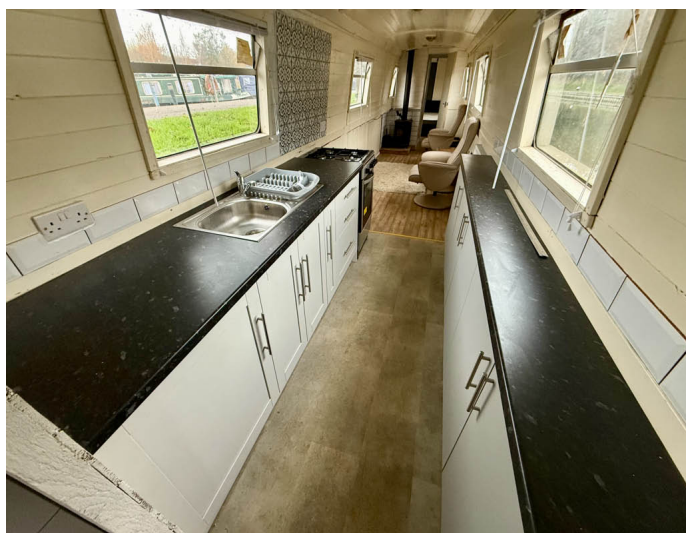
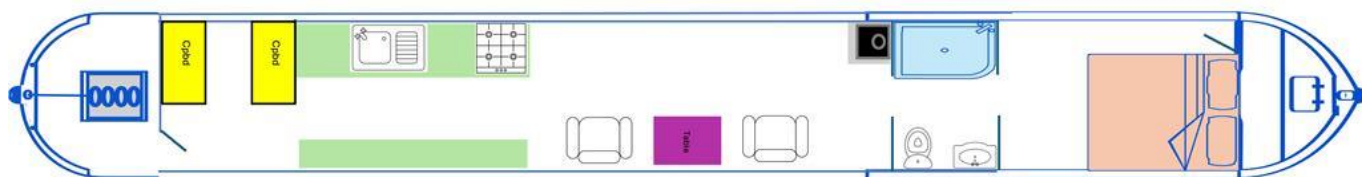
- Insulation Used
- Types Of Wood Used
- Window Types
- Materials Used
- Bulls Eye, Pigeon Box or Houdini Hatch
- Exterior Doors
- Side Hatches
- Front & Back Covers

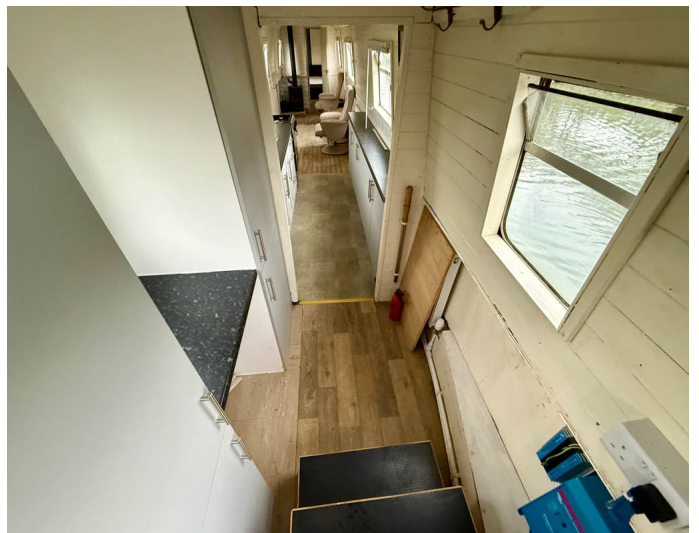
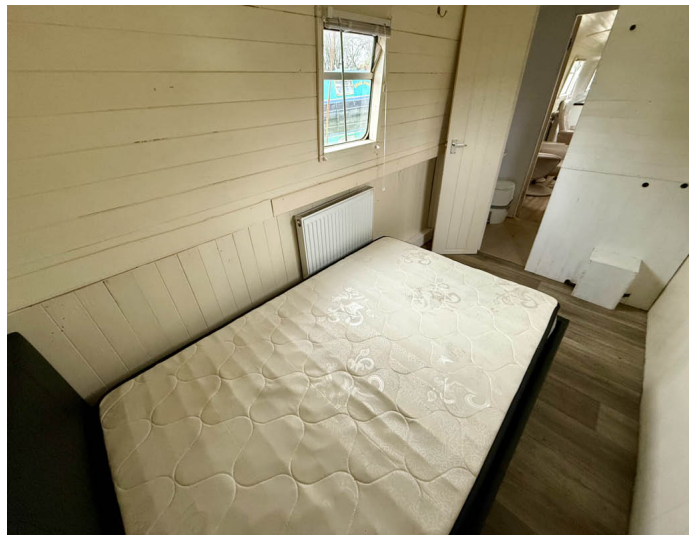
- Polystyrene
- Painted T&G
- Hopper
- Stainless Steel
- 
- Front - Steel, Back - Steel
- 
- Front cratch and cover, back pram cover

## History Of Vessel

- Boat Safety Certificate
- Last Hull Blacking
- Anodes
- Further Maintenance
- Recent Survey
- Additional Information
- RCD/RCR Compliant?
- Further Information

- Feb 2026
- April 2022
- April 2022
- 
- 
- 
- Not Applicable
- 





Whilton Locks, Near Daventry,  
Northants, NN11 2NH  
01327 842577  
sales@whiltonmarina.co.uk  
www.whiltonmarina.co.uk

**For further information please see  
a member of the sales team.**

It is the responsibility of the buyer to ensure that all particulars given in the course of the purchase of the boat are accurate. Such particulars are intended only as a guide and do not constitute a term of any contract.

