



45ft, Eastern Caravans, 2007, Cruiser Style



BERTHS:

4



TOILET:

Pumpout



HEATING:

-



SURVEY:

March 2025



B.S.C:

New with sale



BLACKING:

June 2022



ENGINE:

Beta 35



LAYOUT:

Standard

**Whilton
marina**

Whilton Locks, Near Daventry,
Northants, NN11 2NH

01327 842577

sales@whiltonmarina.co.uk

www.whiltonmarina.co.uk

**For further information please see
a member of the sales team.**

It is the responsibility of the buyer to ensure that all particulars given in the course of the purchase of the boat are accurate. Such particulars are intended only as a guide and do not constitute a term of any contract.



Boat Specification

Plating Specification	10/6/4
Flat, V-Hull or Keeled	Flat Hull
Fitted out By	Eastern Caravans
Fixed Berths	Fixed double
Additional Berths	Sofa bed

Engine Specification

Engine Make	Beta 35
No. Of Cylinders	4
Keel, Water or Air Cooled	Keel Cooled
Gearbox Make	Prm 150
Aqua Drive	No
Bow Thruster	No
Diesel Tank Capacity	180 litres approx

Hot Water & Heating Systems

Source of Hot Water	Engine
Central Heating	-
Solid Fuel Stove	Valor
Water Tank Capacity	675 litres approx
Material used	Integral
Additional Systems	-

Electrical System & Components

12 Volt Lighting	Yes
240 Volt Landline	Yes
Inverter	Sterling 1800 watt
Generator	-
Batteries	3 domestic, 1 starter
Additional Systems	-

Bathroom Specification

Type Of Toilet	Pumpout
Bath Fitted	No
Separate Shower Fitted	Yes
Vanity Basin Fitted	Yes
Additional Systems	-

Kitchen Specification

Make & Model Of Cooker	Thetford
Separate Hob	Vanette 4000/2
Microwave Fitted	-
Make & Model Of Fridge	Shoreline
Gas, 12 volt or 240 volt	12 volt
Additional Systems	-

Fit Out Materials

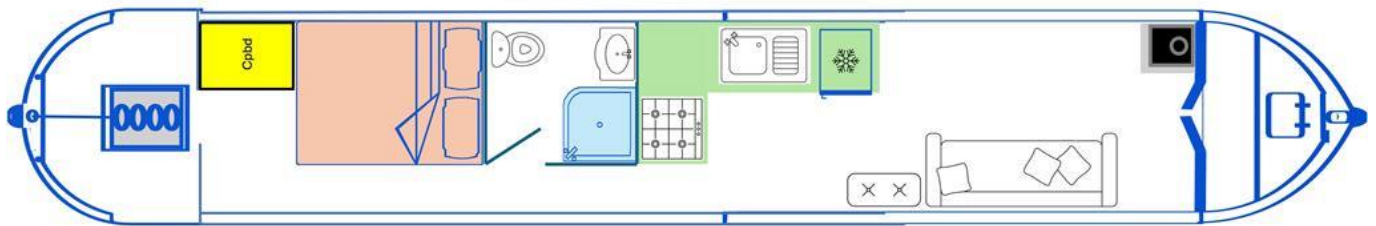
Insulation Used
Types Of Wood Used
Window Types
Materials Used
Bulls Eye, Pigeon Box or Houdini Hatch
Exterior Doors
Side Hatches
Front & Back Covers

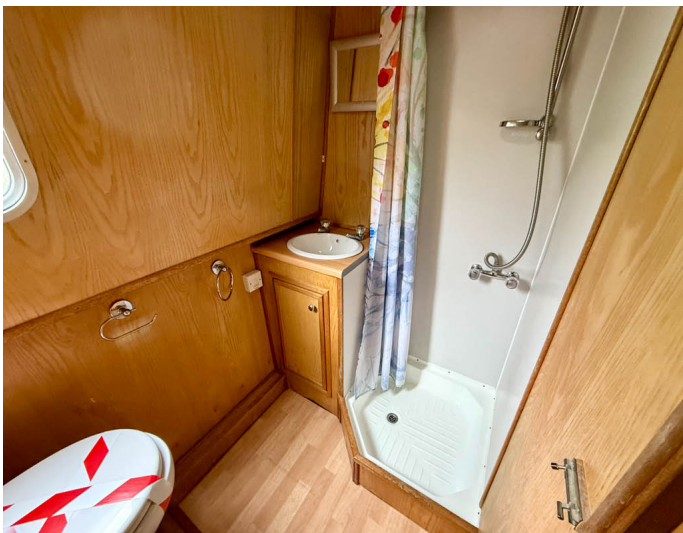
Spray Foam
Oak
Hopper
Stainless Steel
-
Front - Steel, Back - Steel
Yes
No

History Of Vessel

Boat Safety Certificate
Last Hull Blacking
Anodes
Further Maintenance
Recent Survey
Additional Information
RCD/RCR Compliant?
Further Information

New with sale
June 2022
Checked 2022
-
March 2025
-
Yes
-





Whilton Locks, Near Daventry,
Northants, NN11 2NH
01327 842577
sales@whiltonmarina.co.uk
www.whiltonmarina.co.uk

For further information please see
a member of the sales team.

It is the responsibility of the buyer to ensure that all particulars given in
the course of the purchase of the boat are accurate. Such particulars are
intended only as a guide and do not constitute a term of any contract.

