



35ft, Black Country Narrowboats, 2004, Cruiser Style



BERTHS:

4



TOILET:

Porta potti



HEATING:

Mikuni MX40



SURVEY:

-



B.S.C:

December 2026



BLACKING:

2022



ENGINE:

Beta BD722



LAYOUT:

Reverse

**Whilton
marina**

Whilton Locks, Near Daventry,
Northants, NN11 2NH

01327 842577

sales@whiltonmarina.co.uk

www.whiltonmarina.co.uk

**For further information please see
a member of the sales team.**

It is the responsibility of the buyer to ensure that all particulars given in the course of the purchase of the boat are accurate. Such particulars are intended only as a guide and do not constitute a term of any contract.



Boat Specification

Plating Specification	8/6/4
Flat, V-Hull or Keeled	Flat Hull
Fitted out By	Black Country Narrowboats & Owner
Fixed Berths	1 double can be made into 2 singles
Additional Berths	Dining table & bench reconfigures to make 2-berth bed

Engine Specification

Engine Make	Beta BD722
No. Of Cylinders	3
Keel, Water or Air Cooled	Keel Cooled
Gearbox Make	Prm 80D2
Aqua Drive	No
Bow Thruster	No
Diesel Tank Capacity	30 gallons approx

Hot Water & Heating Systems

Source of Hot Water	Engine & Mikuni
Central Heating	Mikuni MX40
Solid Fuel Stove	Hamlet Hardy 4
Water Tank Capacity	80 gallons approx
Material used	Integral
Additional Systems	-

Electrical System & Components

12 Volt Lighting	Yes
240 Volt Landline	Yes
Inverter	Sterling 250w
Generator	-
Batteries	3 domestic (new Feb 2022) and 1 starter
Additional Systems	2 x 150w Solar Panels

Bathroom Specification

Type Of Toilet	Porta potti
Bath Fitted	No
Separate Shower Fitted	Yes
Vanity Basin Fitted	Yes
Additional Systems	-

Kitchen Specification

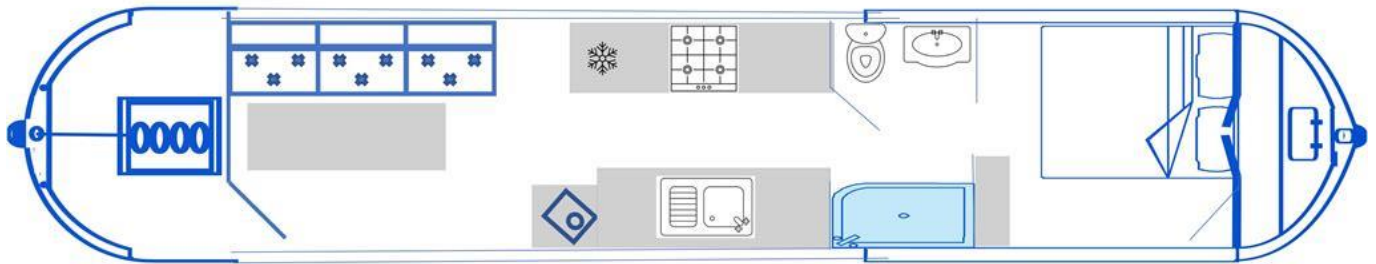
Make & Model Of Cooker	Moffat
Separate Hob	-
Microwave Fitted	-
Make & Model Of Fridge	Shoreline
Gas, 12 volt or 240 volt	12 volt
Additional Systems	-

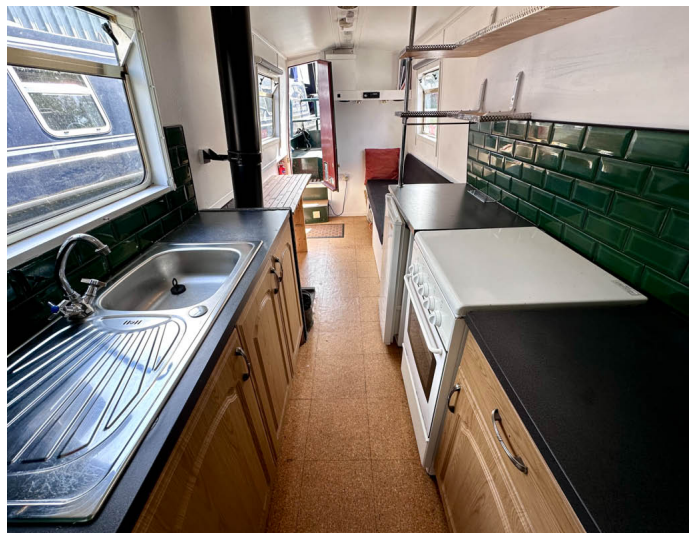
Fit Out Materials

Insulation Used	Rockwool
Types Of Wood Used	Painted ply
Window Types	Hopper
Materials Used	Aluminium
Bulls Eye, Pigeon Box or Houdini Hatch	-
Exterior Doors	Front - Wood , Back - Wood
Side Hatches	No
Front & Back Covers	-

History Of Vessel

Boat Safety Certificate	December 2026
Last Hull Blacking	2022
Anodes	Checked August 2020
Further Maintenance	-
Recent Survey	-
Additional Information	-
RCD/RCR Compliant?	Yes
Further Information	-





Whilton Locks, Near Daventry,
Northants, NN11 2NH
01327 842577
sales@whiltonmarina.co.uk
www.whiltonmarina.co.uk

For further information please see
a member of the sales team.

It is the responsibility of the buyer to ensure that all particulars given in
the course of the purchase of the boat are accurate. Such particulars are
intended only as a guide and do not constitute a term of any contract.

