



## 57ft, Liverpool Boats, 2001, Traditional Style



**BERTHS:**

4



**TOILET:**

Thetford cassette



**HEATING:**

Alde



**SURVEY:**

-



**B.S.C:**

June 2025



**BLACKING:**

April 2022



**ENGINE:**

Vetus 4



**LAYOUT:**

Standard

**Whilton**  
marina

Whilton Locks, Near Daventry,  
Northants, NN11 2NH

01327 842577

[sales@whiltonmarina.co.uk](mailto:sales@whiltonmarina.co.uk)

[www.whiltonmarina.co.uk](http://www.whiltonmarina.co.uk)

**For further information please see  
a member of the sales team.**

It is the responsibility of the buyer to ensure that all particulars given in the course of the purchase of the boat are accurate. Such particulars are intended only as a guide and do not constitute a term of any contract.



## Boat Specification

Plating Specification	10/8/6
Flat, V-Hull or Keeled	Flat Hull
Fitted out By	Professional
Fixed Berths	Fixed double
Additional Berths	Dinette

## Engine Specification

Engine Make	Vetus 4
No. Of Cylinders	4
Keel, Water or Air Cooled	Keel Cooled
Gearbox Make	Prm
Aqua Drive	No
Bow Thruster	No
Diesel Tank Capacity	30 gallons approx

## Hot Water & Heating Systems

Source of Hot Water	Alde & engine
Central Heating	Alde
Solid Fuel Stove	Morso squirrel
Water Tank Capacity	150 gallons approx
Material used	Integral
Additional Systems	-

## Electrical System & Components

12 Volt Lighting	Yes
240 Volt Landline	Yes
Inverter	Yes
Generator	-
Batteries	3 domestic, 1 starter
Additional Systems	-

## Bathroom Specification

Type Of Toilet	Thetford cassette
Bath Fitted	No
Separate Shower Fitted	Yes
Vanity Basin Fitted	Yes
Additional Systems	-

## Kitchen Specification

Make & Model Of Cooker	Yes
Separate Hob	-
Microwave Fitted	Yes
Make & Model Of Fridge	Lec
Gas, 12 volt or 240 volt	Gas
Additional Systems	-

## Fit Out Materials

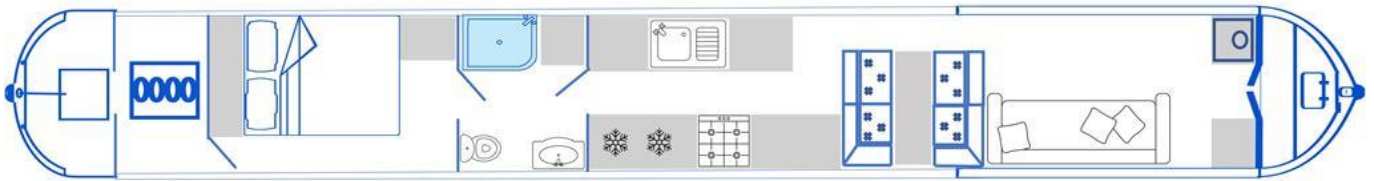
Insulation Used  
Types Of Wood Used  
Window Types  
Materials Used  
Bulls Eye, Pigeon Box or Houdini Hatch  
Exterior Doors  
Side Hatches  
Front & Back Covers

Spray Foam  
Oak  
Double Glazed  
uPVC  
-  
Front - Wood , Back - Steel  
Yes  
Front cratch & cover

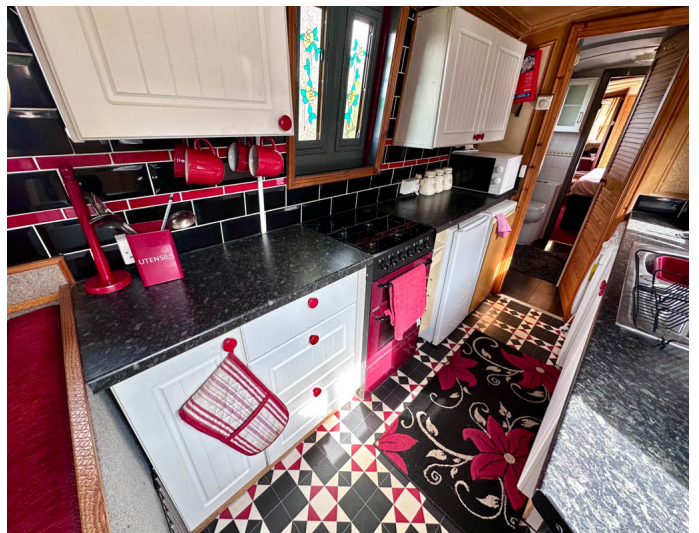
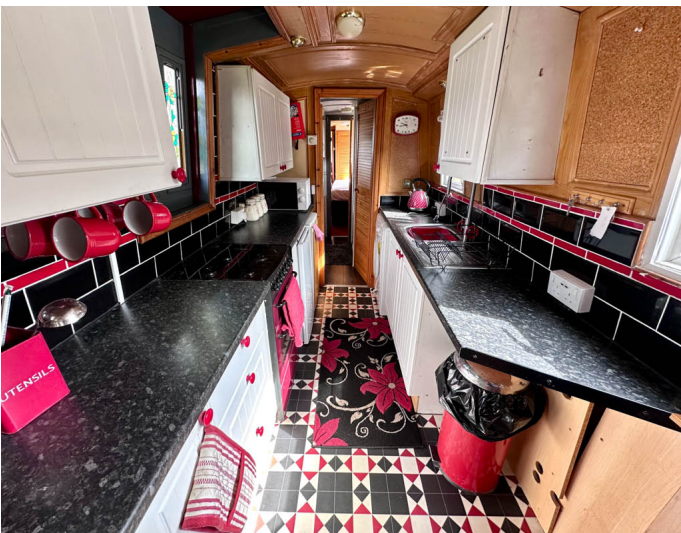
## History Of Vessel

Boat Safety Certificate  
Last Hull Blacking  
Anodes  
Further Maintenance  
Recent Survey  
Additional Information  
RCD/RCR Compliant?  
Further Information

June 2025  
April 2022  
Checked April 2022  
-  
-  
-  
Not Applicable  
-







Whilton Locks, Near Daventry,  
Northants, NN11 2NH  
01327 842577  
sales@whiltonmarina.co.uk  
www.whiltonmarina.co.uk

For further information please see  
a member of the sales team.

It is the responsibility of the buyer to ensure that all particulars given in  
the course of the purchase of the boat are accurate. Such particulars are  
intended only as a guide and do not constitute a term of any contract.

