



48ft, Liverpool Boats, 2005, Semi-Traditional Style



BERTHS:

4



TOILET:

Sani marine
Pumpout



HEATING:

-



SURVEY:

-



B.S.C:

New with sale



BLACKING:

2023



ENGINE:

Barrus shire



LAYOUT:

Reverse

**Whilton
marina**

Whilton Locks, Near Daventry,
Northants, NN11 2NH

01327 842577

sales@whiltonmarina.co.uk

www.whiltonmarina.co.uk

**For further information please see
a member of the sales team.**

It is the responsibility of the buyer to ensure that all particulars given in the course of the purchase of the boat are accurate. Such particulars are intended only as a guide and do not constitute a term of any contract.



Boat Specification

Plating Specification	10/6/4
Flat, V-Hull or Keeled	Flat Hull
Fitted out By	Owner
Fixed Berths	Fixed double
Additional Berths	Make up double

Engine Specification

Engine Make	Barrus shire
No. Of Cylinders	3
Keel, Water or Air Cooled	Keel Cooled
Gearbox Make	Prm 150
Aqua Drive	No
Bow Thruster	No
Diesel Tank Capacity	30 gallons approx

Hot Water & Heating Systems

Source of Hot Water	Engine immersion engine
Central Heating	-
Solid Fuel Stove	Yes
Water Tank Capacity	150 gallons approx
Material used	Integral
Additional Systems	-

Electrical System & Components

12 Volt Lighting	Yes
240 Volt Landline	Yes
Inverter	Victron Phoenix 1600watt
Generator	-
Batteries	4 domestic 1 starter
Additional Systems	-

Bathroom Specification

Type Of Toilet	Sani marine Pumpout
Bath Fitted	No
Separate Shower Fitted	Yes
Vanity Basin Fitted	Yes
Additional Systems	-

Kitchen Specification

Make & Model Of Cooker	Vanette GG2200
Separate Hob	Vanette 4000/2
Microwave Fitted	Yes
Make & Model Of Fridge	-
Gas, 12 volt or 240 volt	-
Additional Systems	-

Fit Out Materials

Insulation Used

Types Of Wood Used

Window Types

Materials Used

Bulls Eye, Pigeon Box or Houdini Hatch

Exterior Doors

Side Hatches

Front & Back Covers

Spray Foam

Oak ply

Porthole

Brass

-

Front - Steel, Back - Steel

Yes

Front cratch & cover and back pram cover

History Of Vessel

Boat Safety Certificate

Last Hull Blacking

Anodes

Further Maintenance

Recent Survey

Additional Information

RCD/RCR Compliant?

Further Information

New with sale

2023

Checked 2023

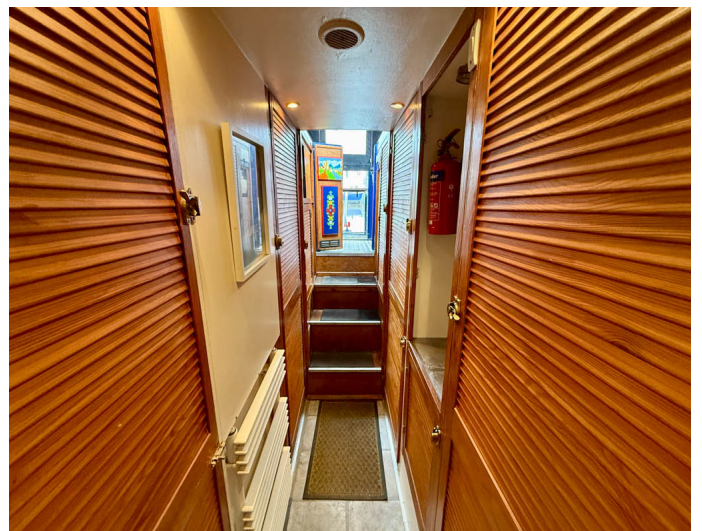
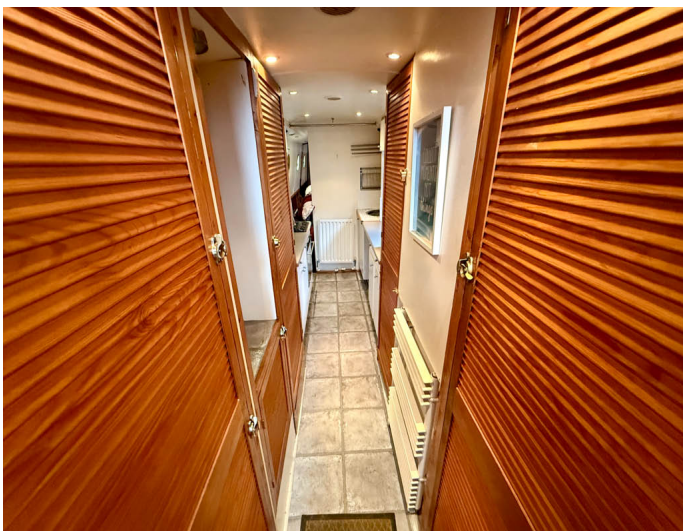
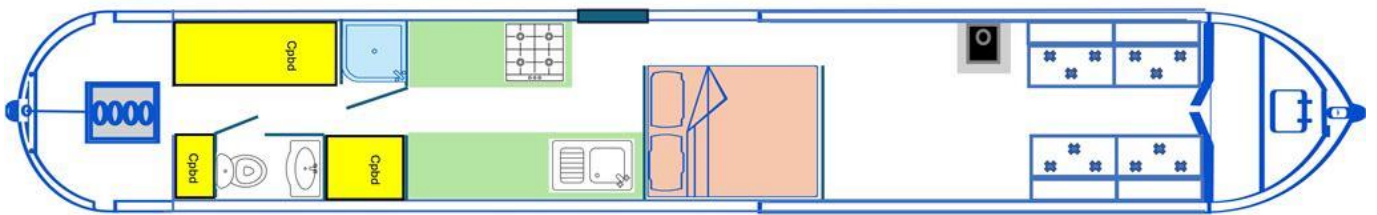
-

-

-

No

-





Whilton Locks, Near Daventry,
Northants, NN11 2NH
01327 842577
sales@whiltonmarina.co.uk
www.whiltonmarina.co.uk

For further information please see
a member of the sales team.

It is the responsibility of the buyer to ensure that all particulars given in
the course of the purchase of the boat are accurate. Such particulars are
intended only as a guide and do not constitute a term of any contract.

