



Hull will be made insurable as part of sale

65ft, ABC, 1990, Semi-Traditional Style



BERTHS:

7



TOILET:

Pump out x2



HEATING:

Alde -non
operational



SURVEY:

August 2024



B.S.C:

New with sale



BLACKING:

New with sale



ENGINE:

Isuzu



LAYOUT:

Standard

Whilton
marina

Whilton Locks, Near Daventry,
Northants, NN11 2NH

01327 842577

sales@whiltonmarina.co.uk

www.whiltonmarina.co.uk

**For further information please see
a member of the sales team.**

It is the responsibility of the buyer to ensure that all particulars given in the course of the purchase of the boat are accurate. Such particulars are intended only as a guide and do not constitute a term of any contract.



Boat Specification

Plating Specification	Hull will be made insurable as part of sale
Flat, V-Hull or Keeled	Flat Hull
Fitted out By	ABC
Fixed Berths	Double and five singles
Additional Berths	-

Engine Specification

Engine Make	Isuzu
No. Of Cylinders	4
Keel, Water or Air Cooled	Keel Cooled
Gearbox Make	-
Aqua Drive	No
Bow Thruster	No
Diesel Tank Capacity	-

Hot Water & Heating Systems

Source of Hot Water	Calorifier
Central Heating	Alde -non operational
Solid Fuel Stove	Stove
Water Tank Capacity	-
Material used	-
Additional Systems	-

Electrical System & Components

12 Volt Lighting	Yes
240 Volt Landline	No
Inverter	-
Generator	-
Batteries	One starter all domestic need replacement
Additional Systems	-

Bathroom Specification

Type Of Toilet	Pump out x2
Bath Fitted	Hip bath
Separate Shower Fitted	Yes
Vanity Basin Fitted	Yes
Additional Systems	-

Kitchen Specification

Make & Model Of Cooker	Yes
Separate Hob	-
Microwave Fitted	-
Make & Model Of Fridge	Yes
Gas, 12 volt or 240 volt	12 volt
Additional Systems	-

Fit Out Materials

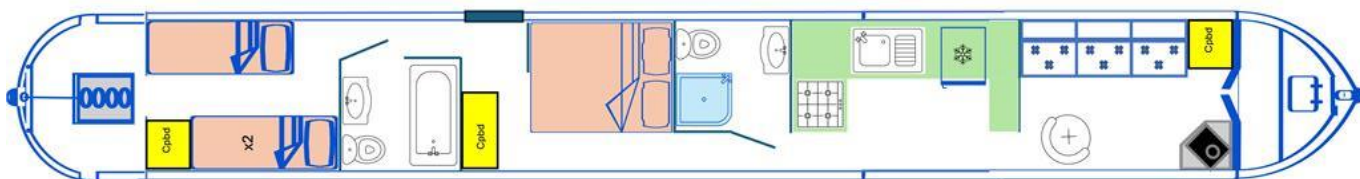
Insulation Used
Types Of Wood Used
Window Types
Materials Used
Bulls Eye, Pigeon Box or Houdini Hatch
Exterior Doors
Side Hatches
Front & Back Covers

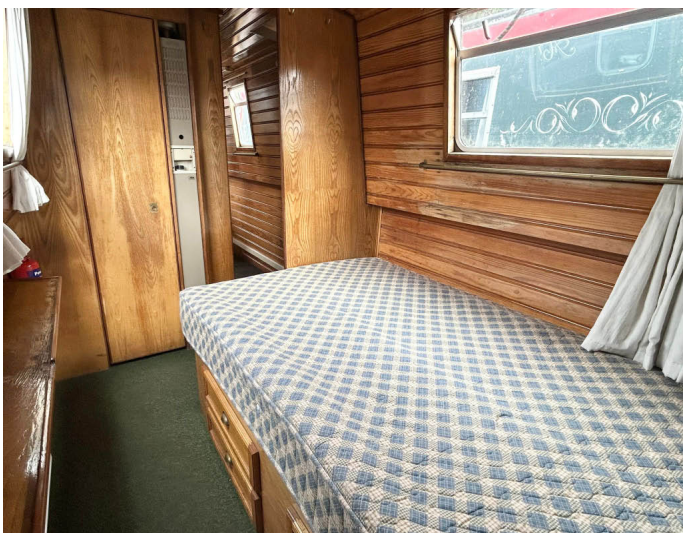
Polystyrene
-
Hopper
-
-
-
Yes
-

History Of Vessel

Boat Safety Certificate
Last Hull Blacking
Anodes
Further Maintenance
Recent Survey
Additional Information
RCD/RCR Compliant?
Further Information

New with sale
New with sale
New with sale
-
August 2024
Hull will be made insurable as part of sale
Not Applicable
Hull will be made insurable as part of sale





Whilton Locks, Near Daventry,
Northants, NN11 2NH
01327 842577
sales@whiltonmarina.co.uk
www.whiltonmarina.co.uk

**For further information please see
a member of the sales team.**

It is the responsibility of the buyer to ensure that all particulars given in the course of the purchase of the boat are accurate. Such particulars are intended only as a guide and do not constitute a term of any contract.

