



Hull will be made insurable as part of sale

58ft, Wakefield Boats, 2006, Cruiser Style



**BERTHS:**

4



**TOILET:**

Jabsco Pumpout



**HEATING:**

-



**SURVEY:**

-



**B.S.C:**

June 2027



**BLACKING:**

Nov 2022



**ENGINE:**

Beta 38



**LAYOUT:**

Reverse

**Whilton  
marina**

Whilton Locks, Near Daventry,  
Northants, NN11 2NH

01327 842577

[sales@whiltonmarina.co.uk](mailto:sales@whiltonmarina.co.uk)

[www.whiltonmarina.co.uk](http://www.whiltonmarina.co.uk)

**For further information please see  
a member of the sales team.**

It is the responsibility of the buyer to ensure that all particulars given in the course of the purchase of the boat are accurate. Such particulars are intended only as a guide and do not constitute a term of any contract.



## Boat Specification

Plating Specification	Unknown
Flat, V-Hull or Keeled	Flat Hull
Fitted out By	Carl Seaman
Fixed Berths	Fixed double
Additional Berths	Fold out

## Engine Specification

Engine Make	Beta 38
No. Of Cylinders	4
Keel, Water or Air Cooled	Keel Cooled
Gearbox Make	PRM 125
Aqua Drive	No
Bow Thruster	No
Diesel Tank Capacity	45 gallons approx

## Hot Water & Heating Systems

Source of Hot Water	Morco boiler
Central Heating	-
Solid Fuel Stove	Hamlet
Water Tank Capacity	100 gallons approx
Material used	Unknown
Additional Systems	-

## Electrical System & Components

12 Volt Lighting	Yes
240 Volt Landline	Yes
Inverter	Sterling 1500 watt
Generator	-
Batteries	3 domestic, 1 starter
Additional Systems	4 solar panels

## Bathroom Specification

Type Of Toilet	Jabsco Pumpout
Bath Fitted	No
Separate Shower Fitted	Yes
Vanity Basin Fitted	Yes
Additional Systems	-

## Kitchen Specification

Make & Model Of Cooker	Indesit
Separate Hob	-
Microwave Fitted	-
Make & Model Of Fridge	Inlander
Gas, 12 volt or 240 volt	12 volt
Additional Systems	-

## Fit Out Materials

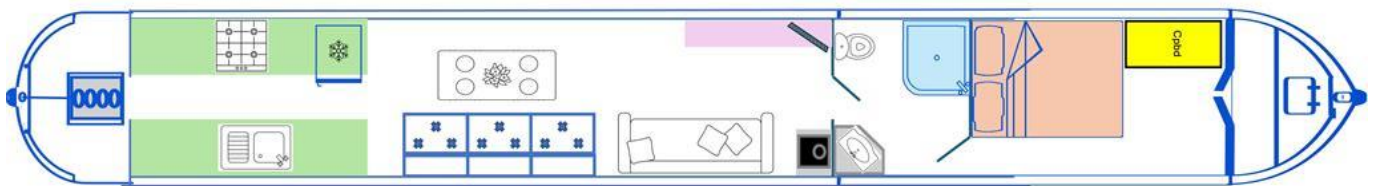
Insulation Used  
Types Of Wood Used  
Window Types  
Materials Used  
Bulls Eye, Pigeon Box or Houdini Hatch  
Exterior Doors  
Side Hatches  
Front & Back Covers

Rockwool  
Laminate  
Hopper  
Powder coated  
-  
Front - Wood, Back - Steel  
Yes  
Back pram cover

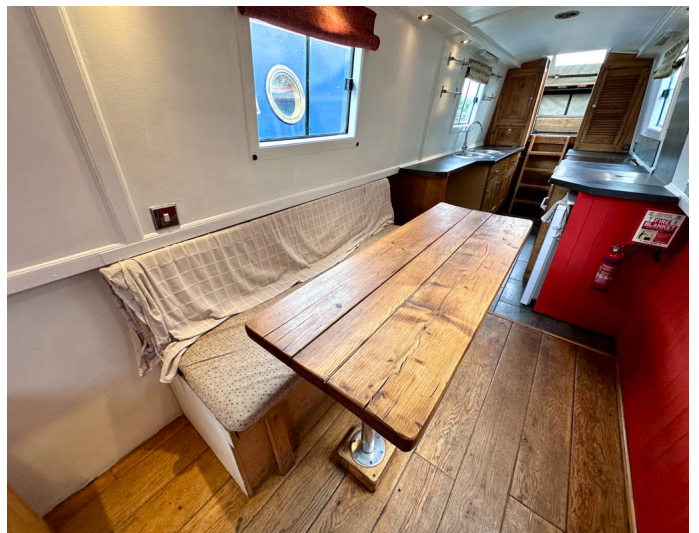
## History Of Vessel

Boat Safety Certificate  
Last Hull Blacking  
Anodes  
Further Maintenance  
Recent Survey  
Additional Information  
RCD/RCR Compliant?  
Further Information

June 2027  
Nov 2022  
Nov 2022  
-  
-  
Hull will be made insurable as part of sale  
Yes  
-







Whilton Locks, Near Daventry,  
Northants, NN11 2NH  
01327 842577  
sales@whiltonmarina.co.uk  
www.whiltonmarina.co.uk

For further information please see  
a member of the sales team.

It is the responsibility of the buyer to ensure that all particulars given in  
the course of the purchase of the boat are accurate. Such particulars are  
intended only as a guide and do not constitute a term of any contract.

