



## 35ft, Colecraft, 1984, Traditional Style



**BERTHS:**

4



**TOILET:**

Porta potti



**HEATING:**

-



**SURVEY:**

-



**B.S.C:**

July 2026



**BLACKING:**

2021



**ENGINE:**

Bukh DV24



**LAYOUT:**

Reverse

**Whilton  
marina**

Whilton Locks, Near Daventry,  
Northants, NN11 2NH

01327 842577

[sales@whiltonmarina.co.uk](mailto:sales@whiltonmarina.co.uk)

[www.whiltonmarina.co.uk](http://www.whiltonmarina.co.uk)

**For further information please see  
a member of the sales team.**

It is the responsibility of the buyer to ensure that all particulars given in the course of the purchase of the boat are accurate. Such particulars are intended only as a guide and do not constitute a term of any contract.



## Boat Specification

Plating Specification	Unknown
Flat, V-Hull or Keeled	Flat Hull
Fitted out By	Owner
Fixed Berths	2 singles can be made into a double
Additional Berths	2 arm chairs

## Engine Specification

Engine Make	Bukh DV24
No. Of Cylinders	2
Keel, Water or Air Cooled	Keel Cooled
Gearbox Make	PRM 125
Aqua Drive	No
Bow Thruster	No
Diesel Tank Capacity	50 gallons approx

## Hot Water & Heating Systems

Source of Hot Water	Paloma
Central Heating	-
Solid Fuel Stove	No
Water Tank Capacity	250 gallons approx
Material used	Integral
Additional Systems	Catley catalytic space heater

## Electrical System & Components

12 Volt Lighting	Yes
240 Volt Landline	No
Inverter	Waecoperfect Power PP300
Generator	-
Batteries	3 domestic, 1 starter
Additional Systems	-

## Bathroom Specification

Type Of Toilet	Porta potti
Bath Fitted	No
Separate Shower Fitted	Yes
Vanity Basin Fitted	Yes
Additional Systems	-

## Kitchen Specification

Make & Model Of Cooker	Newhome Stoves 5000 WLM
Separate Hob	-
Microwave Fitted	-
Make & Model Of Fridge	Shoreline RR102W
Gas, 12 volt or 240 volt	12 volt
Additional Systems	-



## Fit Out Materials

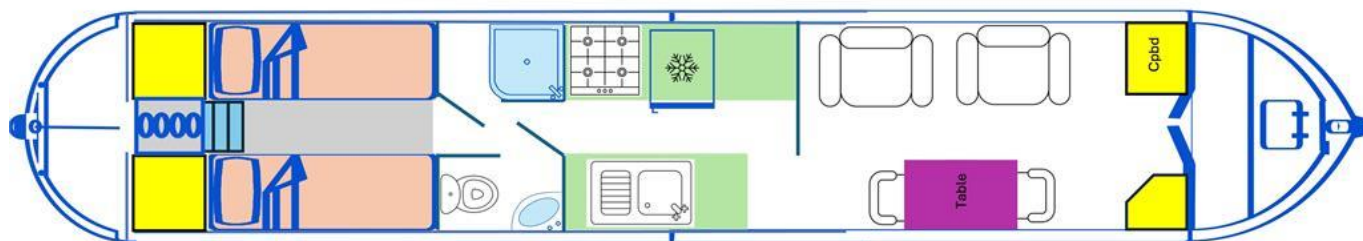
Insulation Used  
Types Of Wood Used  
Window Types  
Materials Used  
Bulls Eye, Pigeon Box or Houdini Hatch  
Exterior Doors  
Side Hatches  
Front & Back Covers

Polystyrene  
Pine T&G, oak and mahogany  
Double glazed hopper  
Aluminium  
-  
Front - Wood, Back - Steel  
No  
Front cover

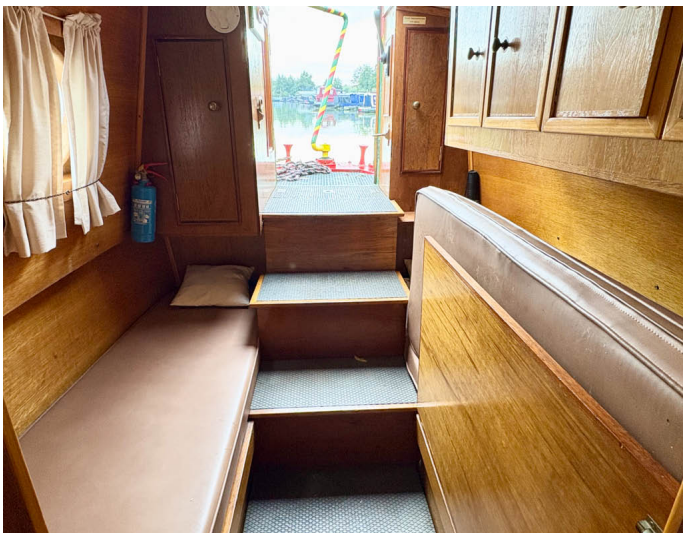
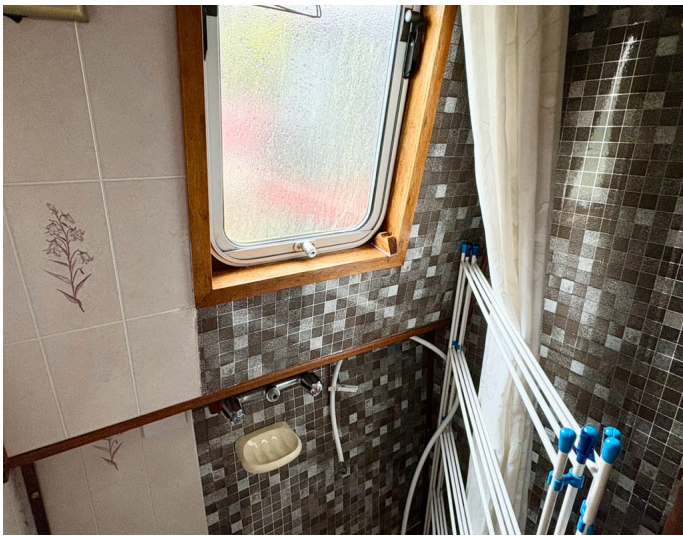
## History Of Vessel

Boat Safety Certificate  
Last Hull Blacking  
Anodes  
Further Maintenance  
Recent Survey  
Additional Information  
RCD/RCR Compliant?  
Further Information

July 2026  
2021  
2021  
-  
-  
-  
No  
-







Whilton Locks, Near Daventry,  
Northants, NN11 2NH  
01327 842577  
sales@whiltonmarina.co.uk  
www.whiltonmarina.co.uk

**For further information please see  
a member of the sales team.**

It is the responsibility of the buyer to ensure that all particulars given in the course of the purchase of the boat are accurate. Such particulars are intended only as a guide and do not constitute a term of any contract.

